

**New**

# Crystic Crestapol® Closed Mould Resin System

from Scott Bader with some outstanding properties

## Crystic Crestapol® 1210

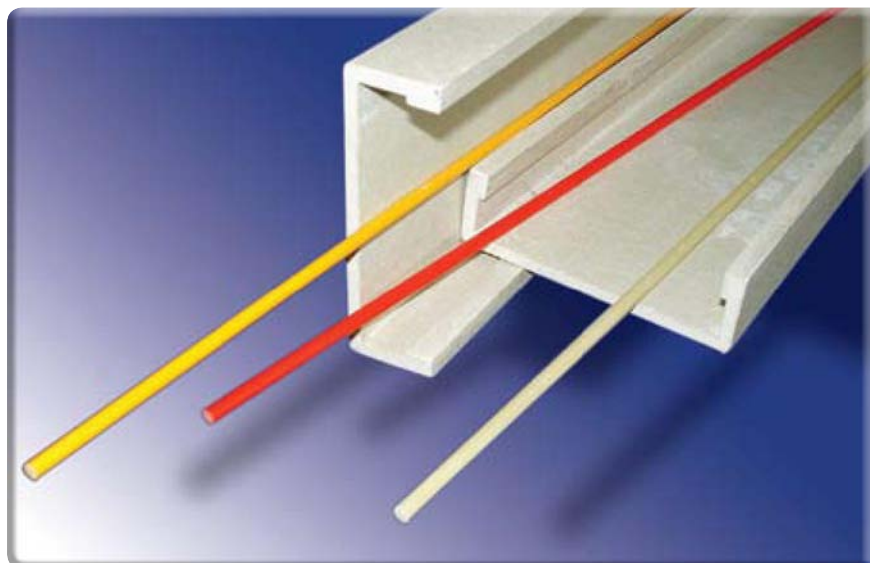
A tough low viscosity resin which has a very rapid cure and can be highly filled. Designed for use in Closed Mould applications. The system can be optimised to get very low cycle times of 6-7 minutes.

### KEY FEATURES OF CRYSTIC CRESTAPOL® 1210 AND 1212

- VERY FAST CURE
- GELTIME FROM 2 - 60 MINS
- TOUGH RESIN MATRIX
- VERY LOW VISCOSITY
- EXCELLENT SURFACE FINISH

## Crystic Crestapol® 1212

A tough, very low viscosity resin for closed mould and pultrusion. It can be heavily filled with ATH for very high fire, smoke and toxic fume performance.



## Crystic Crestapol® 1210

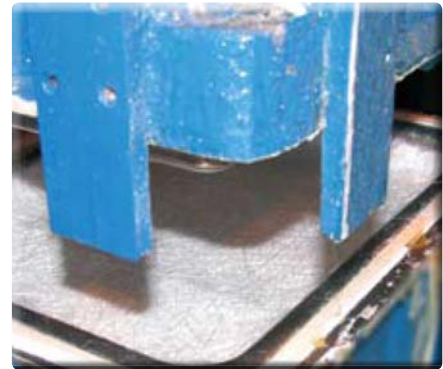
A closed mould application showing a cycle time of six minutes and 30 seconds



Mould



Reinforcement being laid in the press



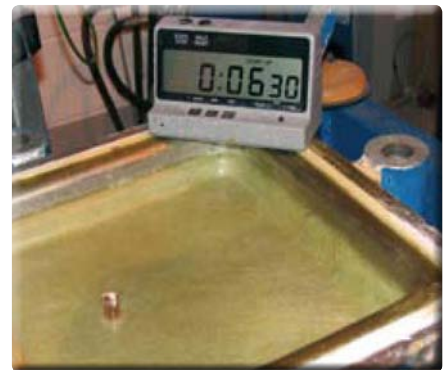
Press being closed



Resin being injected



Cycle time of 6 minutes 30 seconds



Cycle time of 6 minutes 30 seconds

## Crystic Crestapol® 1212

Very fast cure, high reactivity resin. After peak exotherm, resin is fully cured (no need for post cure). Time from geltime to peak exotherm, 5 to 10 minutes. Allows efficient, rapid manufacture of fully cured items. Compatible with polyester gelcoats.

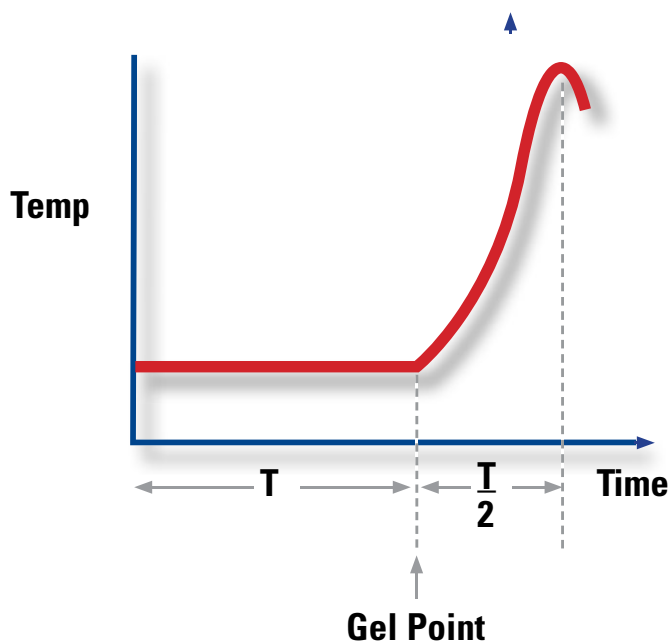
\* 24 hours @ 20°C, 16 hours @ 40°C

\*\* Made with 4 layers 450g/m<sup>2</sup> PB CSM

++ Curing schedule - 24 hours @ 20°C, 5 hours @ 80°C, 3 hours @ 120°C



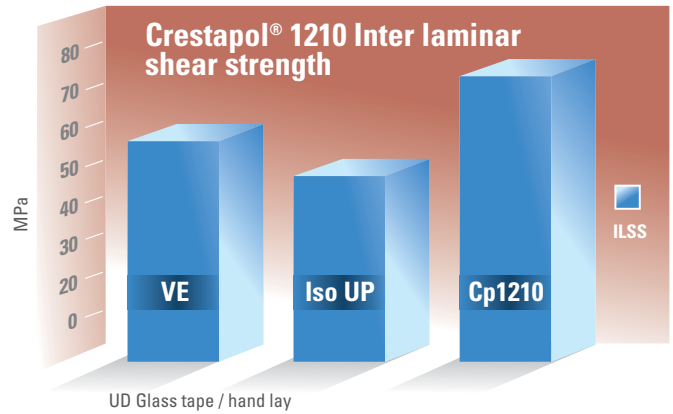
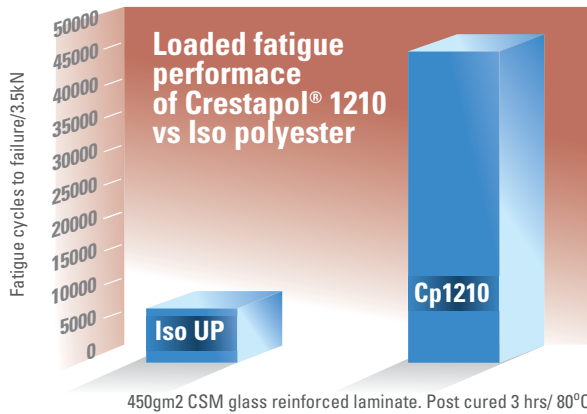
Laminate being trimmed



## Typical Properties for Crestapol 1210

Property	Unit of Measurement	Fully cured* resin
Barcol Hardness		47
Deflection Temperature underload (1.8MPa) <sup>++</sup>	°C	111
Tensile Strength	MPa	73
Tensile Modulus	GPa	3.7
Elongation at Break	%	2.5

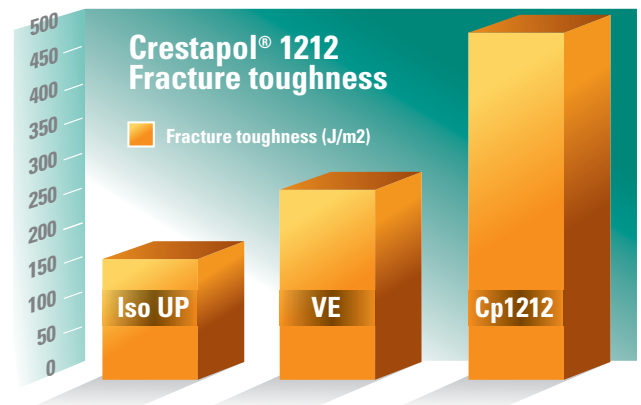
Property	Unit of Measurement	CSM** Laminate
Glass Content	%	30.0
Tensile Strength	MPa	128
Tensile Modulus	GPa	8.0
Elongation at Break	%	1.7
Flexural Strength	MPa	211
Flexural Modulus	GPa	7.9



## Laminate Properties for Crestapol 1212

Property	Unit of Measurement	C.S.M** Laminate
Glass Content	%	30.8
Tensile Strength	MPa	118
Tensile Modulus	GPa	6.9
Elongation at Break	%	2.2
Flexural Strength	MPa	196
Flexural Modulus	GPa	5.7

Curing Schedule - 24 hours @ 20°C, 16 hours @ 40°C



Property	Unit of Measurement	Fully cured* Resin
Barcol Hardness		33
Deflection Temperature under load (1.80MPa)	°C	87
Tensile Strength	MPa	65
Tensile Modulus	GPa	2.7
Elongation at Break	%	5.1

# Scott Bader Composites Europe

## HEAD OFFICE

### Scott Bader Company Limited

Wollaston  
England  
Tel: +44 1933 663100  
Fax: +44 1933 666139  
email: [composites@scottbader.com](mailto:composites@scottbader.com)

### Scott Bader SA

Amiens  
France  
Tel: +33 3 22 66 27 66  
Fax: +33 3 22 66 27 80  
email: [composites@scottbader.fr](mailto:composites@scottbader.fr)

### Scott Bader Iberica

Barcelona  
Spain  
Tel: +34 93 553 1162  
Fax: +34 93 553 1163  
email: [composites@scottbader.es](mailto:composites@scottbader.es)

### Scott Bader S.A.

Zur Drehscheibe 5  
D - 92637 Weiden  
Germany  
Tel: +49 961 401 84474  
Fax: +49 961 401 84476  
email: [composites@scottbader.de](mailto:composites@scottbader.de)

### Scott Bader Ireland

Dublin  
Ireland  
Tel: +353 1801 5660  
Fax: +353 1801 5657  
email: [composites@scottbader.ie](mailto:composites@scottbader.ie)

### Scott Bader Scandinavia AB

Falkenberg  
Sweden  
Tel: +46 346 10100  
Fax: +46 346 59226  
email: [composites@scottbader.se](mailto:composites@scottbader.se)

### Scott Bader Eastern Europe

Liberec  
Czech Republic  
Tel: +420 48 5228 344/5111 255  
Fax: +420 48 5228 345/5111 254  
email: [composites@scottbader.cz](mailto:composites@scottbader.cz)

### Scott Bader d.o.o.

10 000 Zagreb  
Zitnjak BB  
Croatia  
Tel: +385 1 240 6440  
Fax: +385 1 240 4573  
email: [info@scottbader.hr](mailto:info@scottbader.hr)

# Scott Bader Group Companies

### Scott Bader Inc

Stow, OH  
USA  
Tel: +1 330 920 4410  
Fax: +1 330 920 4415  
email: [info@scottbaderinc.com](mailto:info@scottbaderinc.com)

### Scott Bader (Pty) Limited

Hammarsdale  
Republic of South Africa  
Tel: +27 31 736 8500  
Fax: +27 31 736 8511  
email: [composites@scottbader.co.za](mailto:composites@scottbader.co.za)

### Scott Bader Middle East Limited

Jebel Ali  
Dubai  
Tel: +971 488 35025  
Fax: +971 488 35319  
email: [info@scottbader.ae](mailto:info@scottbader.ae)

### Scott Bader Asia

Shanghai 200042  
China  
Tel: +86 (21) 52987778 / +86 (21) 52988887  
Fax: +86 (21) 52988889  
email: [info@scottbader.cn](mailto:info@scottbader.cn)



**Leading composites innovation for over 60 years**



Visit us at:

[scottbader.com](http://scottbader.com)

CRESTOPOL/1212/8/10